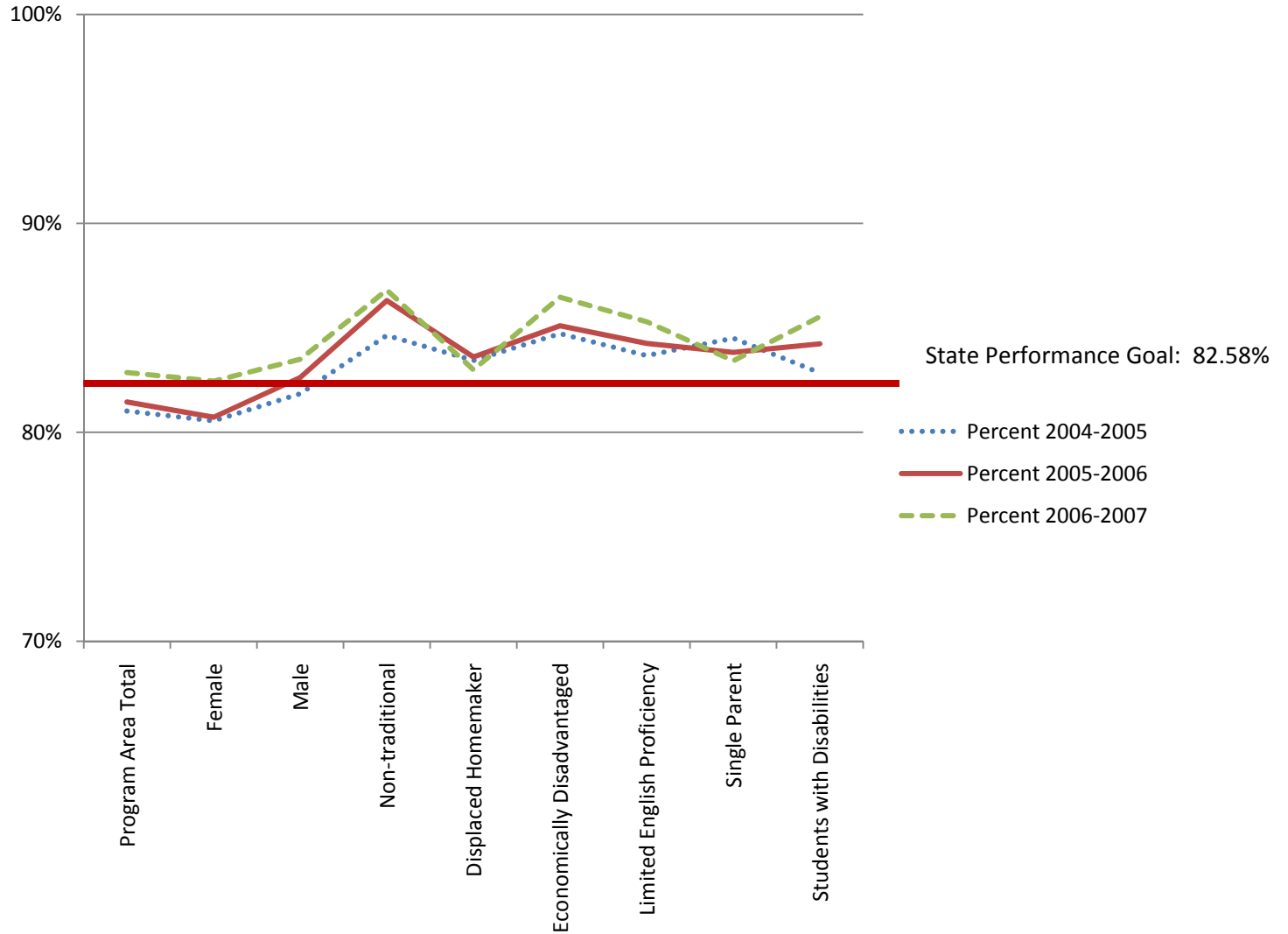


Perkins IV Core Indicator 3P1: TOP Code 05 – Business & Management – All Colleges

Students who have successfully completed a minimum "threshold of 12 or more units of related coursework" in a CTE program area and who: 1) persisted in education at the community college level or 2) transferred to a four year institution.



Data source: <http://reports.cccco.edu/Reports/Pages/Report.aspx?ItemPath=%2fPERKINS+IV%2f2009-2010+Fiscal+Year+Planning%2f2.+Trend+Reports+by+Core+Indicator%2f2009-10+Core+3+-+Total+Completions+-+Performance+Trend+Report+by+College>

Perkins IV Core Indicator 3P1: TOP Code 05 – Business & Management – All Colleges

Students who have successfully completed a minimum "threshold of 12 or more units of related coursework" in a CTE program area and who: 1) persisted in education at the community college level or 2) transferred to a four year institution.

	Percent			Count			Total		
	2004-2005	2005-2006	2006-2007	2004-2005	2005-2006	2006-2007	2004-2005	2005-2006	2006-2007
Program Area Total	81%	81%	83%	31,563	32,473	32,945	38,957	39,867	39,760
Female	81%	81%	82%	19,375	19,428	19,478	24,054	24,067	23,623
Male	82%	83%	83%	12,068	12,889	13,299	14,744	15,599	15,928
Non-traditional	85%	86%	87%	9,774	10,101	10,457	11,548	11,704	12,046
Displaced Homemaker	83%	84%	83%	786	811	893	942	970	1,076
Economically Disadvantaged	85%	85%	86%	15,677	16,577	16,754	18,503	19,480	19,376
Limited English Proficiency	84%	84%	85%	4,145	4,014	3,979	4,954	4,764	4,665
Single Parent	85%	84%	83%	2,034	2,224	2,139	2,407	2,653	2,564
Students with Disabilities	83%	84%	86%	1,845	1,998	2,027	2,227	2,372	2,370
Technical Preparation	82%	81%	81%	1,963	3,054	3,145	2,393	3,751	3,866
Migrant	0%	0%	0%	0	0	0	0	0	0