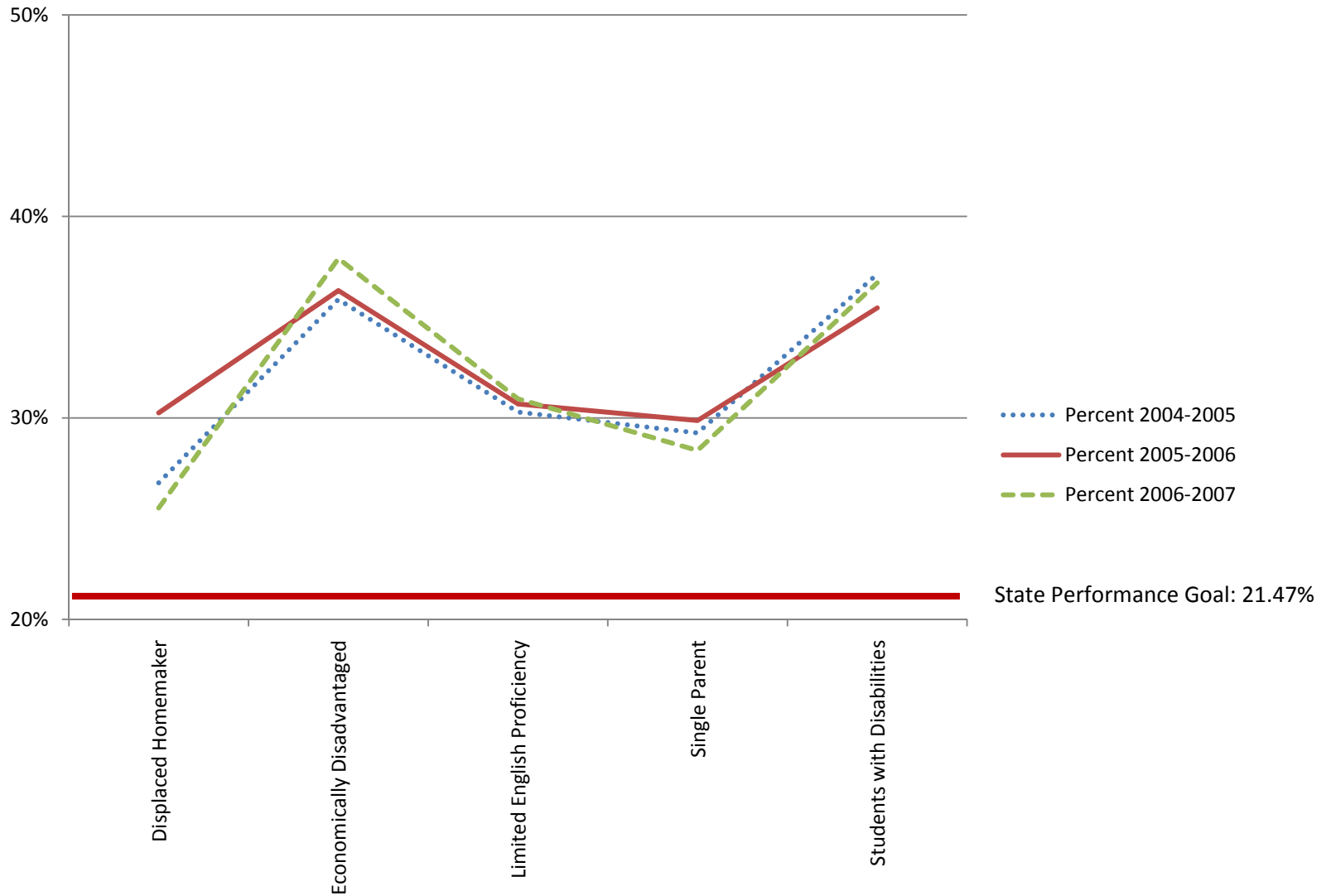


Perkins IV Core Indicator 5P1: TOP Code 05 – Business & Management – All Colleges

Percent of underrepresented gender student concentrators participating in CTE coursework leading to employment in nontraditional occupations



Data source: <http://reports.cccco.edu/Reports/Pages/Report.aspx?ItemPath=%2fPERKINS+IV%2f2009-2010+Fiscal+Year+Planning%2f2.+Trend+Reports+by+Core+Indicator%2f2009-10+Core+5a+-+Non-Traditional+Participation+-+Performance+Trend+Report+by+College>

Perkins IV Core Indicator 5P1: TOP Code 05 – Business & Management – All Colleges

Percent of underrepresented gender student concentrators participating in CTE coursework leading to employment in nontraditional occupations

	Percent			Count			Total		
	2004-2005	2005-2006	2006-2007	2004-2005	2005-2006	2006-2007	2004-2005	2005-2006	2006-2007
Program Area Total	39%	40%	41%	12,670	12,860	13,256	32,225	32,475	32,322
Female	26%	26%	27%	5,391	5,347	5,424	20,640	20,331	19,926
Male	63%	63%	64%	7,279	7,513	7,832	11,467	11,996	12,246
Displaced Homemaker	27%	30%	26%	196	219	206	732	724	807
Economically Disadvantaged	36%	36%	38%	5,760	5,997	6,147	16,053	16,512	16,215
Limited English Proficiency	30%	31%	31%	1,392	1,349	1,331	4,596	4,395	4,301
Single Parent	29%	30%	28%	549	615	562	1,877	2,059	1,980
Students with Disabilities	37%	35%	37%	700	700	712	1,885	1,974	1,940