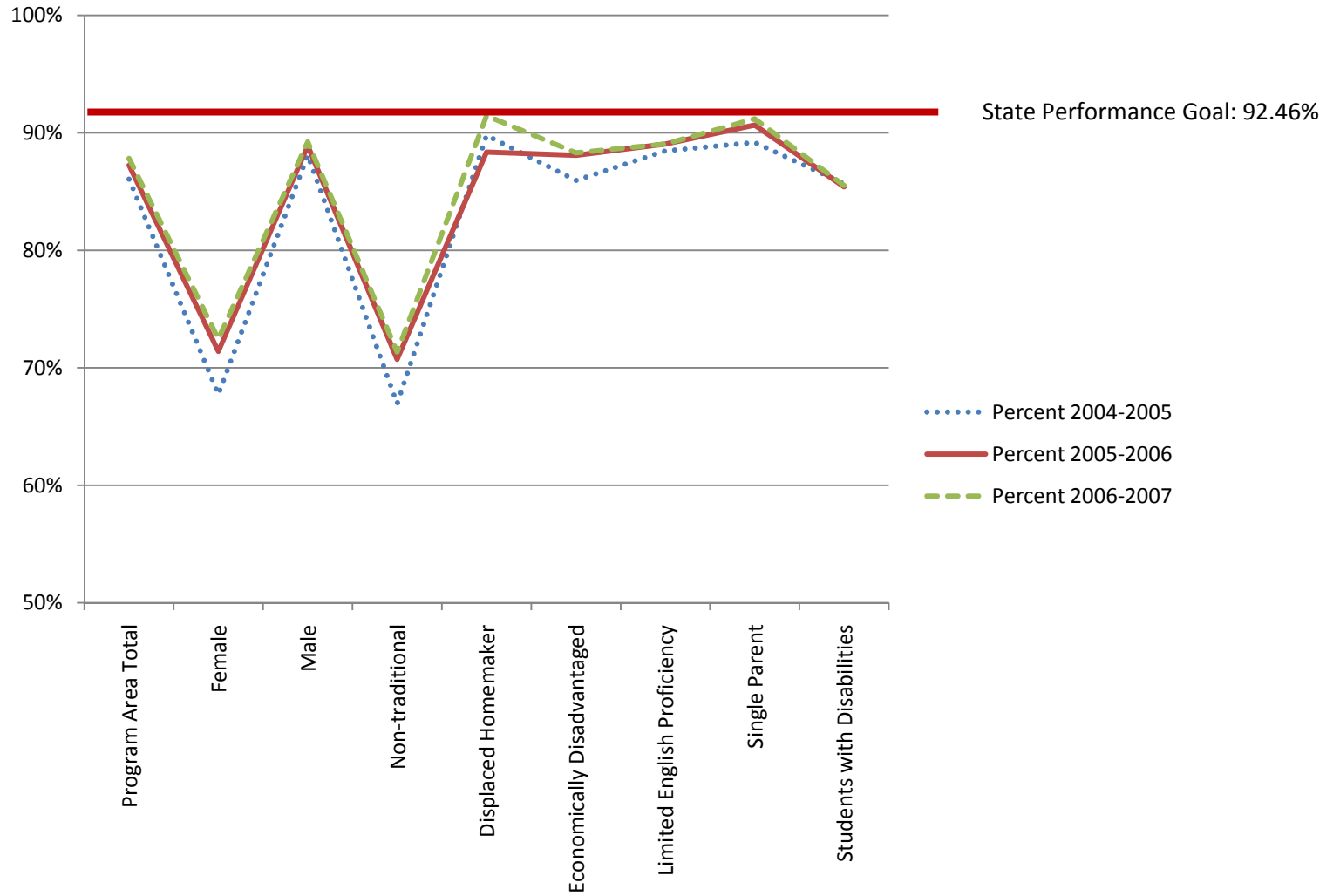


Perkins IV Core Indicator 1P1: TOP Code 09 – Engineering & Industrial Technologies – All Colleges

CTE concentrators earning a GPA of 2.0 or higher in CTE courses to assess technical skill attainment



Data source: <http://reports.cccco.edu/Reports/Pages/Report.aspx?ItemPath=%2fPERKINS+IV%2f2009-2010+Fiscal+Year+Planning%2f2.+Trend+Reports+by+Core+Indicator%2f2009-10+Core+1+-+Skill+Attainment+-+Performance+Trend+Report+by+College>

Perkins IV Core Indicator 1P1: TOP Code 09 – Engineering & Industrial Technologies – All Colleges

CTE concentrators earning a GPA of 2.0 or higher in CTE courses to assess technical skill attainment

	Percent			Count			Total		
	2004-2005	2005-2006	2006-2007	2004-2005	2005-2006	2006-2007	2004-2005	2005-2006	2006-2007
Program Area Total	86.06%	87.23%	87.83%	25,674	26,449	30,129	29,834	30,320	34,305
Female	67.74%	71.40%	72.45%	2,016	2,032	2,133	2,976	2,846	2,944
Male	88.11%	88.90%	89.24%	23,503	24,255	27,795	26,674	27,283	31,146
Non-traditional	66.95%	70.73%	71.35%	1,819	1,841	1,885	2,717	2,603	2,642
Displaced Homemaker	89.79%	88.36%	91.46%	378	296	600	421	335	656
Economically Disadvantaged	85.95%	88.08%	88.31%	9,847	9,565	10,528	11,457	10,859	11,922
Limited English Proficiency	88.47%	89.05%	89.06%	1,481	1,252	1,310	1,674	1,406	1,471
Single Parent	89.18%	90.66%	91.19%	915	1,010	1,191	1,026	1,114	1,306
Students with Disabilities	85.68%	85.41%	85.52%	1,322	1,223	1,423	1,543	1,432	1,664
Technical Preparation	91.65%	88.67%	89.42%	2,205	2,480	2,629	2,406	2,797	2,940
Migrant	0.00%	0.00%	0.00%	0	0	0	0	0	0
State	87.96%	87.6%	87.41%	212,746	209,278	212,648	241,858	238,906	243,284