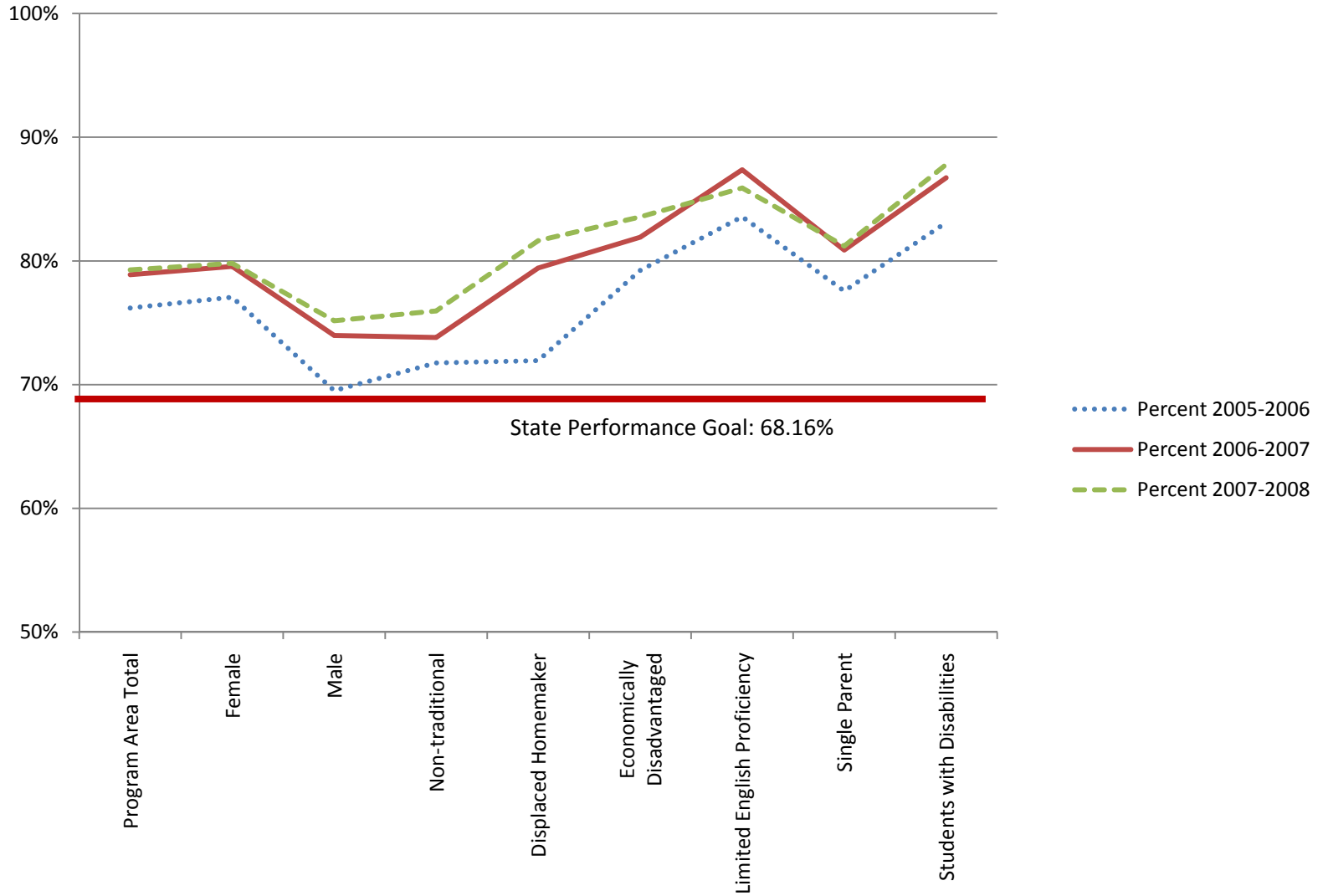


Perkins IV Core Indicator 2P1: TOP Code 13 – Family & Consumer Sciences – All Colleges

"Leavers and Completer" concentrators who: 1) receive a degree, certificate, or equivalent; or 2) complete a transfer program and are classified as *Transfer Prepared*.



Data source: <http://reports.cccco.edu/Reports/Pages/Report.aspx?ItemPath=%2fPERKINS+IV%2f2009-2010+Fiscal+Year+Planning%2f2.+Trend+Reports+by+Core+Indicator%2f2009-10+Core+2+-+Total+Completions+-+Performance+Trend+Report+by+College>

Perkins IV Core Indicator 2P1: TOP Code 13 – Family & Consumer Sciences – All Colleges

CTE "Leavers and Completer" concentrators who: 1) receive a degree, certificate, or equivalent; or 2) complete a transfer program and are classified as *Transfer Prepared*.

	Percent			Count			Total		
	2005-2006	2006-2007	2007-2008	2005-2006	2006-2007	2007-2008	2005-2006	2006-2007	2007-2008
Program Area Total	76%	79%	79%	11,503	11,295	11,137	15,097	14,317	14,049
Female	77%	80%	80%	10,366	10,140	9,950	13,451	12,746	12,467
Male	70%	74%	75%	1,097	1,114	1,138	1,578	1,506	1,514
Non-traditional	72%	74%	76%	757	792	853	1,055	1,073	1,123
Displaced Homemaker	72%	79%	82%	323	359	409	449	452	501
Economically Disadvantaged	79%	82%	84%	6,755	6,598	6,555	8,526	8,054	7,845
Limited English Proficiency	84%	87%	86%	1,668	1,625	1,572	1,996	1,860	1,830
Single Parent	78%	81%	81%	923	880	907	1,190	1,088	1,117
Students with Disabilities	83%	87%	88%	1,121	1,169	1,151	1,349	1,348	1,311
Technical Preparation	74%	77%	81%	967	1,186	1,325	1,313	1,543	1,645
Migrant	0%	0%	0%	0	0	0	0	0	0