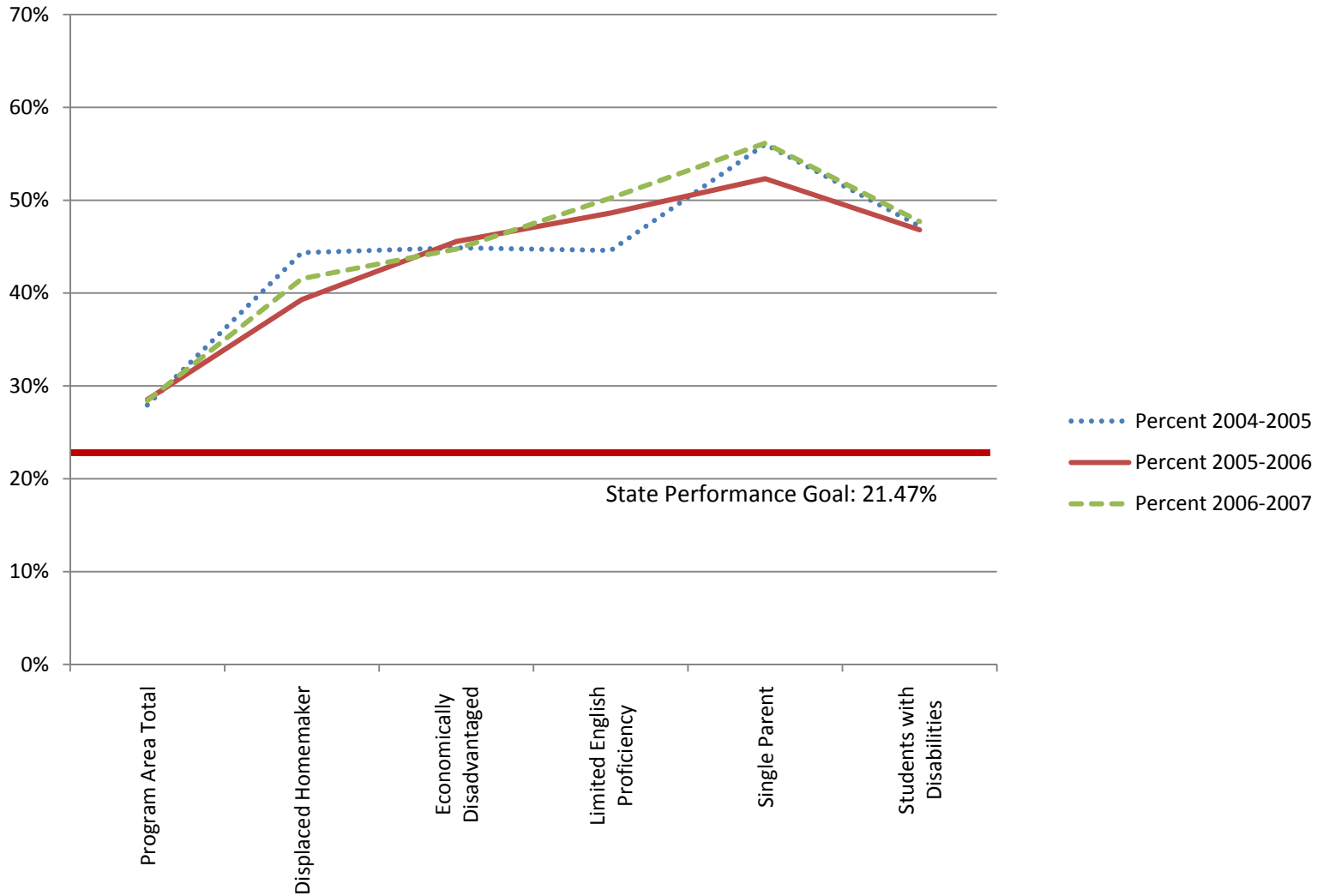


**Perkins IV Core Indicator 5P1: TOP Code 21 – Public & Protective Services – All Colleges**

**Percent of underrepresented gender student concentrators participating in CTE coursework leading to employment in nontraditional occupations**



Data source: <http://reports.cccco.edu/Reports/Pages/Report.aspx?ItemPath=%2fPERKINS+IV%2f2009-2010+Fiscal+Year+Planning%2f2.+Trend+Reports+by+Core+Indicator%2f2009-10+Core+5a+-+Non-Traditional+Participation+-+Performance+Trend+Report+by+College>

**Perkins IV Core Indicator 5P1: TOP Code 21 – Public & Protective Services – All Colleges**

**Percent of underrepresented gender student concentrators participating in  
CTE coursework leading to employment in nontraditional occupations**

	Percent			Count			Total		
	2004-2005	2005-2006	2006-2007	2004-2005	2005-2006	2006-2007	2004-2005	2005-2006	2006-2007
<b>Program Area Total</b>	28%	29%	28%	7,051	7,858	7,801	25,234	27,536	27,448
<b>Female</b>	100%	100%	100%	7,051	7,858	7,801	7,051	7,858	7,801
<b>Male</b>	0%	0%	0%	0	0	0	18,107	19,594	19,554
<b>Displaced Homemaker</b>	44%	39%	42%	161	202	182	363	514	438
<b>Economically Disadvantaged</b>	45%	46%	45%	3,703	4,330	4,288	8,251	9,505	9,584
<b>Limited English Proficiency</b>	45%	49%	50%	95	107	104	213	220	207
<b>Single Parent</b>	56%	52%	56%	771	820	827	1,376	1,567	1,473
<b>Students with Disabilities</b>	47%	47%	48%	439	463	491	930	989	1,029