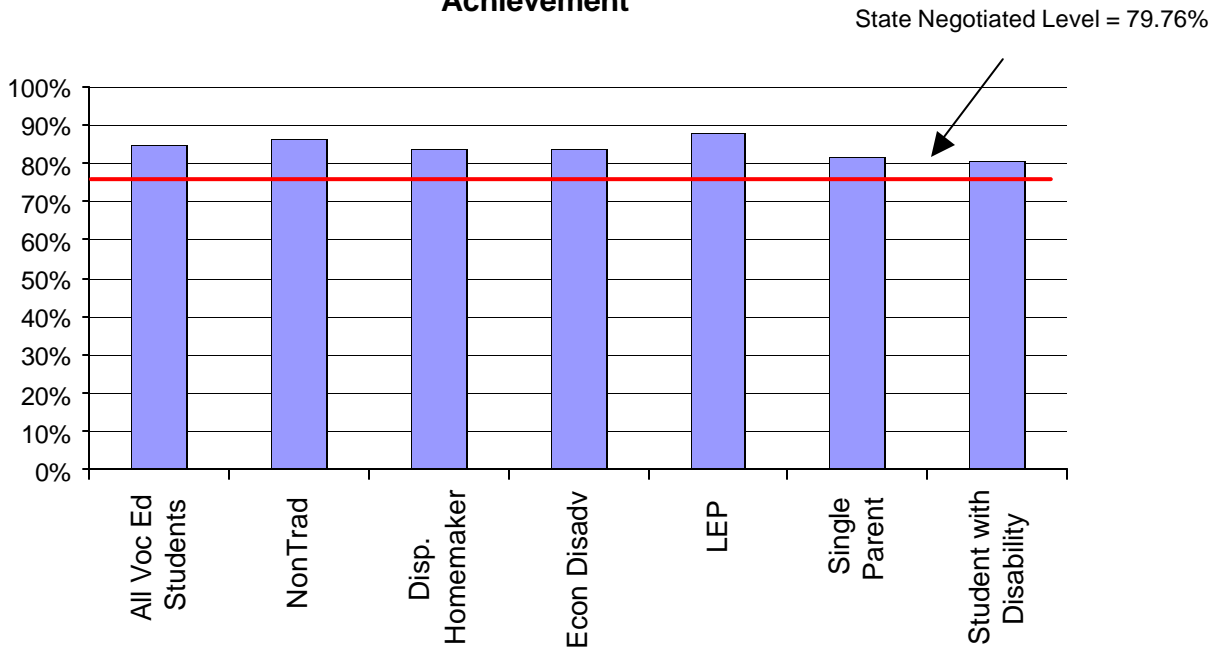
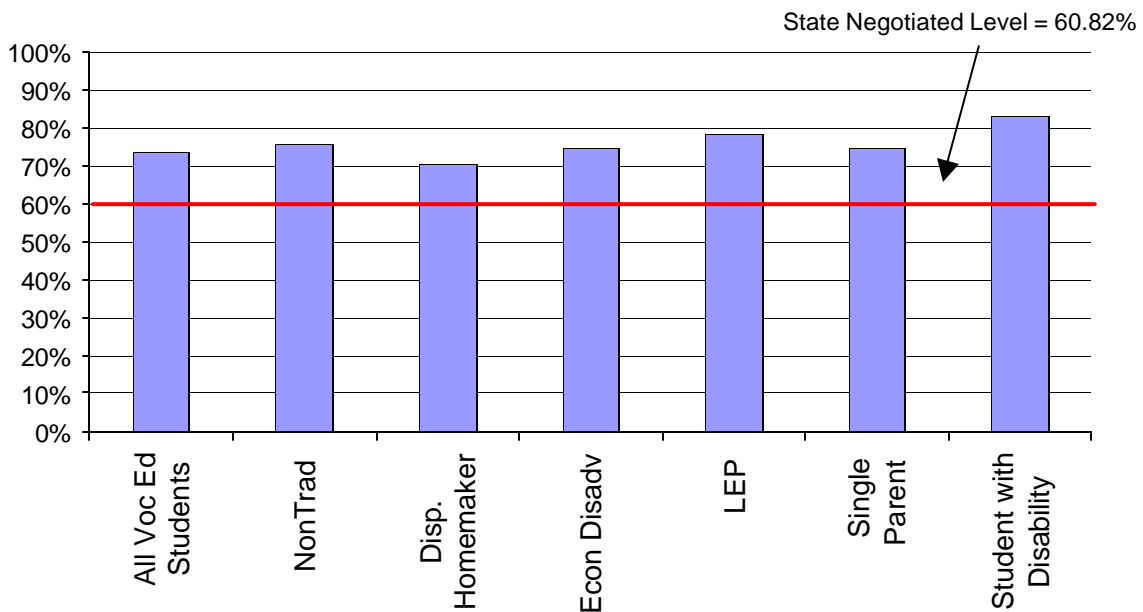


**Aggregated Core Indicator Data – 2005-06  
Performance Of All Voc Ed & Special Populations Students**

**Statewide CORE Indicator 1  
Achievement**

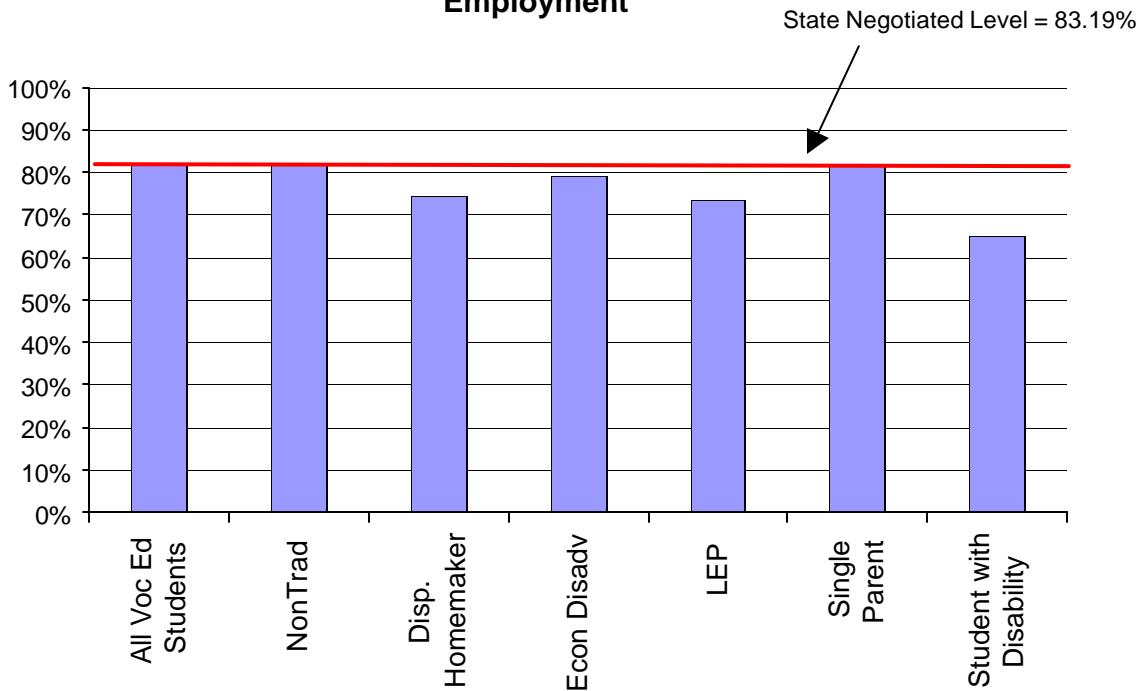


**Statewide CORE Indicator 2  
Completions**

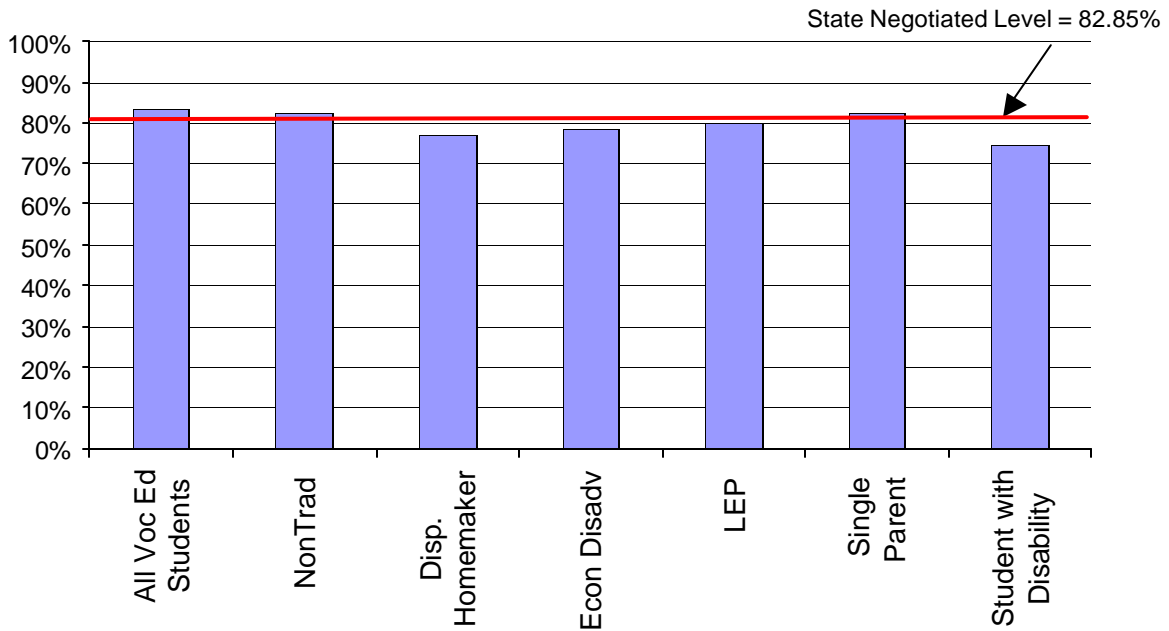


Graphs reflect data reported for the most recent year available. For example, outcomes for Indicator 1 (Skill Attainment) are from the previous academic year while outcomes for Indicators 2 – 4 (Completions, Placement, Retention and Equity) are from the previous year for students who were last enrolled two years prior. For a complete explanation, see [http://misweb.cccco.edu/voc\\_ed/vtea/VTEA1999-00Reportsv3.pdf](http://misweb.cccco.edu/voc_ed/vtea/VTEA1999-00Reportsv3.pdf)

### Statewide CORE Indicator 3a Employment

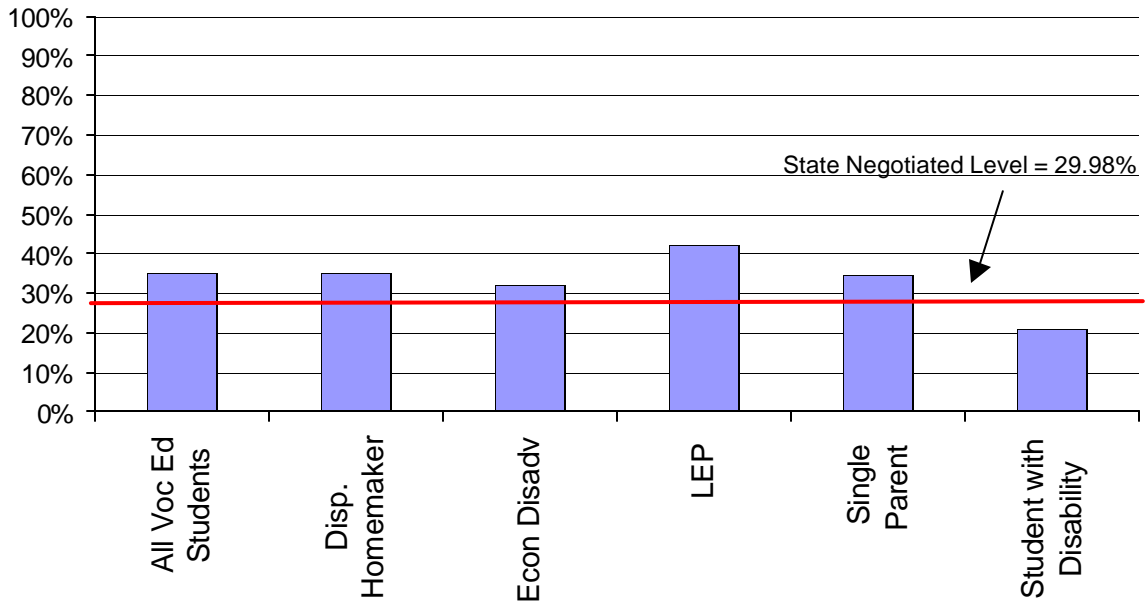


### Statewide CORE Indicator 3b Employment Retention

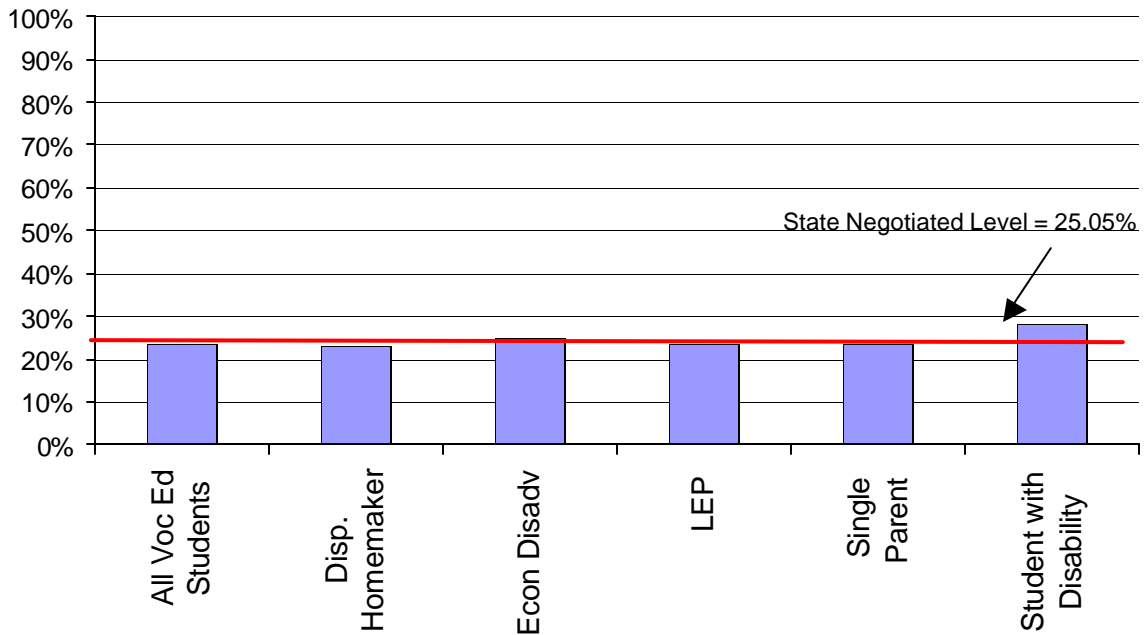


Graphs reflect data reported for the most recent year available. For example, outcomes for Indicator 1 (Skill Attainment) are from the previous academic year while outcomes for Indicators 2 – 4 (Completions, Placement, Retention and Equity) are from the previous year for students who were last enrolled two years prior. For a complete explanation, see [http://misweb.cccco.edu/voc\\_ed/vtea/VTEA1999-00Reportsv3.pdf](http://misweb.cccco.edu/voc_ed/vtea/VTEA1999-00Reportsv3.pdf)

### Statewide CORE Indicator 4a) Nontraditional Participation



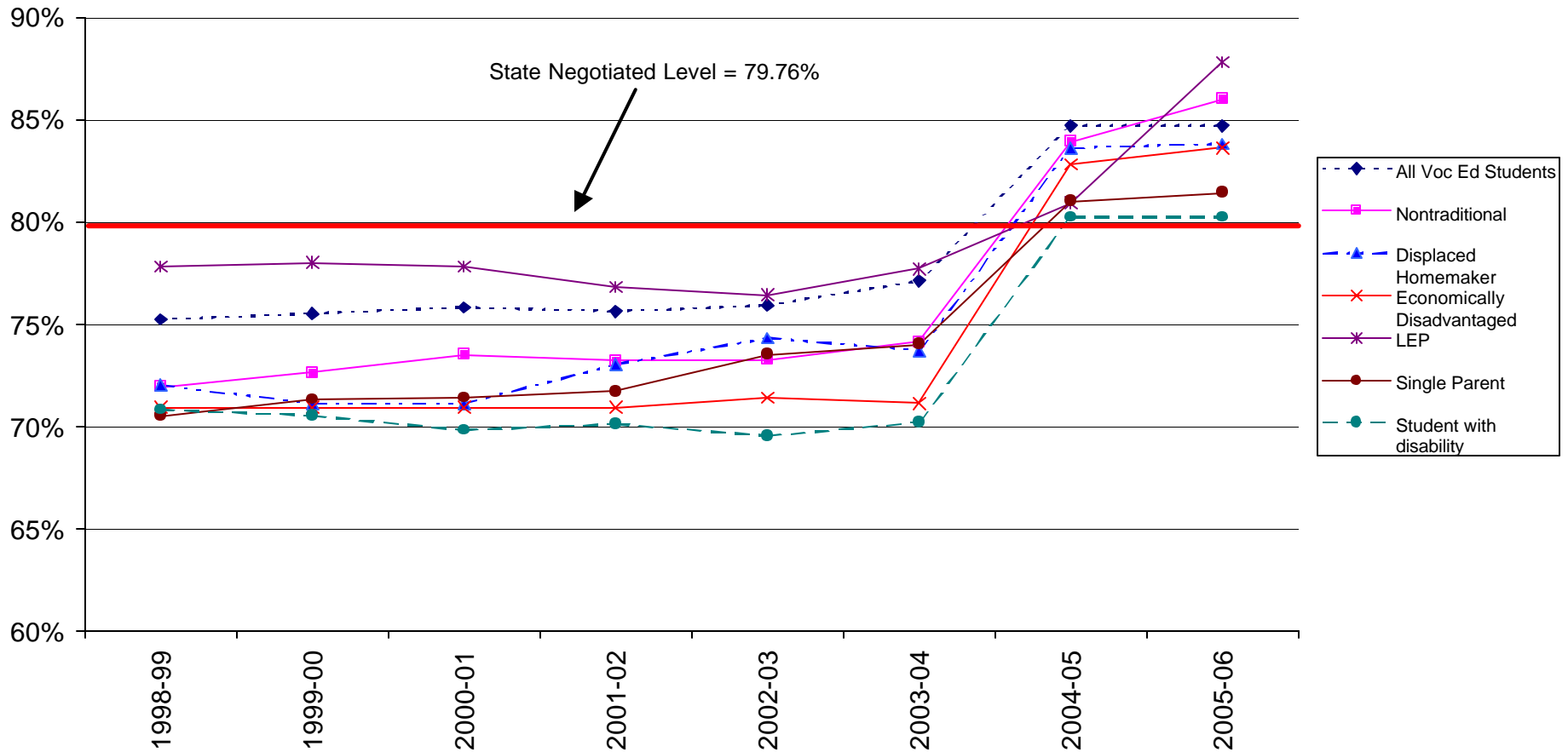
### Statewide CORE Indicator 4b) Nontraditional Completion



Graphs reflect data reported for the most recent year available. For example, outcomes for Indicator 1 (Skill Attainment) are from the previous academic year while outcomes for Indicators 2 – 4 (Completions, Placement, Retention and Equity) are from the previous year for students who were last enrolled two years prior. For a complete explanation, see [http://misweb.cccco.edu/voc\\_ed/vtea/VTEA1999-00Reportsv3.pdf](http://misweb.cccco.edu/voc_ed/vtea/VTEA1999-00Reportsv3.pdf)

**Aggregated Core Indicator Data – 1998-2005  
Performance Of All Voc Ed & Special Populations Students**

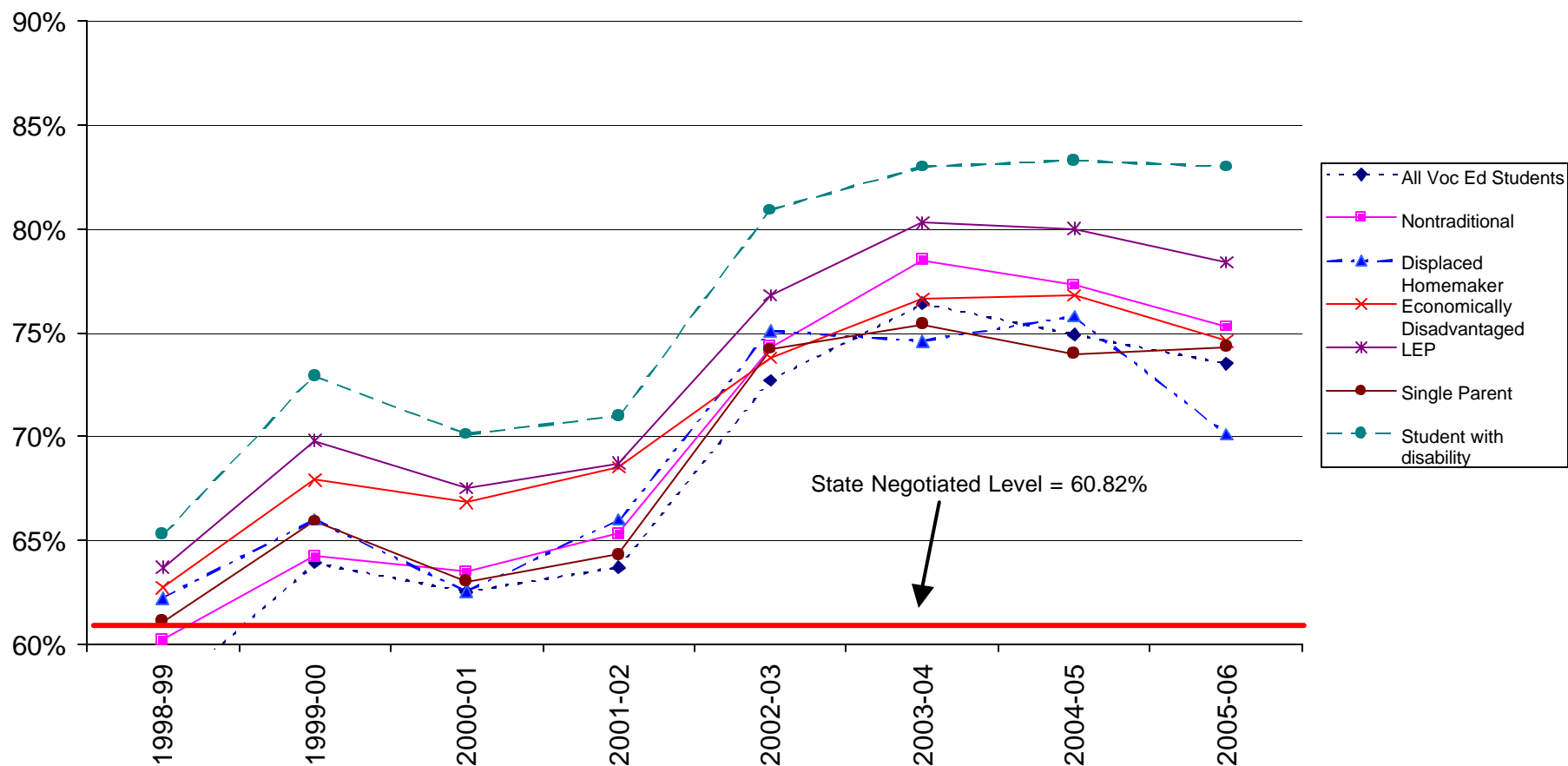
**CORE Indicator 1 - Percent of students successfully completing  
Vocational courses with a grade of “C” or better**



- ◆ All groups have made significant progress in meeting and exceeding the State Negotiated Level over the last two years.
- ◆ LEP students and Nontraditional students have the highest rates of success amongst the six special population groups.
- ◆ Single Parent and Students with Disabilities have had the lowest rate of success amongst the six groups.

Graphs reflect data reported for the most recent year available. For example, outcomes for Indicator 1 (Skill Attainment) are from the previous academic year while outcomes for Indicators 2 – 4 (Completions, Placement, Retention and Equity) are from the previous year for students who were last enrolled two years prior. For a complete explanation, see [http://misweb.cccco.edu/voc\\_ed/vtea/VTEA1999-00Reportsv3.pdf](http://misweb.cccco.edu/voc_ed/vtea/VTEA1999-00Reportsv3.pdf)

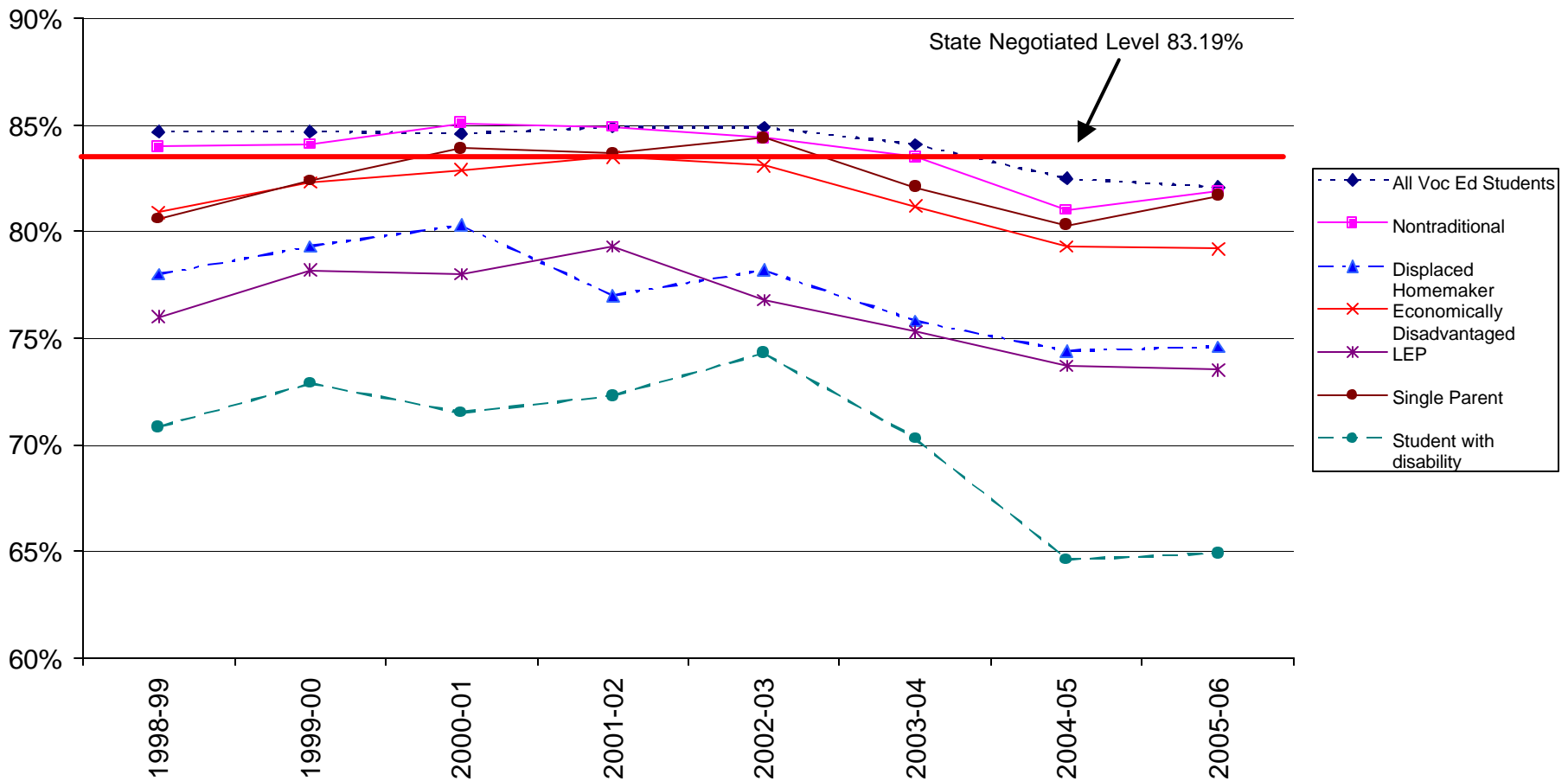
**Core Indicator #2 – Percent of vocational education students who receive a degree or certificate, transfer to UC or CSU, or join the military**



- ◆ All groups have risen significantly above the State Negotiated Level since 1998-99. However, gains have remained stagnant or declined since 2004-05.
- ◆ Students with Disabilities and LEP students have had the highest rates of completion amongst the six groups. However data on skill attainment (1a) reported that students with disabilities have the least success.
- ◆ Single Parent and Displaced Homemakers have the lowest rate of completion amongst the six groups.

Graphs reflect data reported for the most recent year available. For example, outcomes for Indicator 1 (Skill Attainment) are from the previous academic year while outcomes for Indicators 2 – 4 (Completions, Placement, Retention and Equity) are from the previous year for students who were last enrolled two years prior. For a complete explanation, see [http://misweb.cccco.edu/voc\\_ed/vtea/VTEA1999-00Reportsv3.pdf](http://misweb.cccco.edu/voc_ed/vtea/VTEA1999-00Reportsv3.pdf)

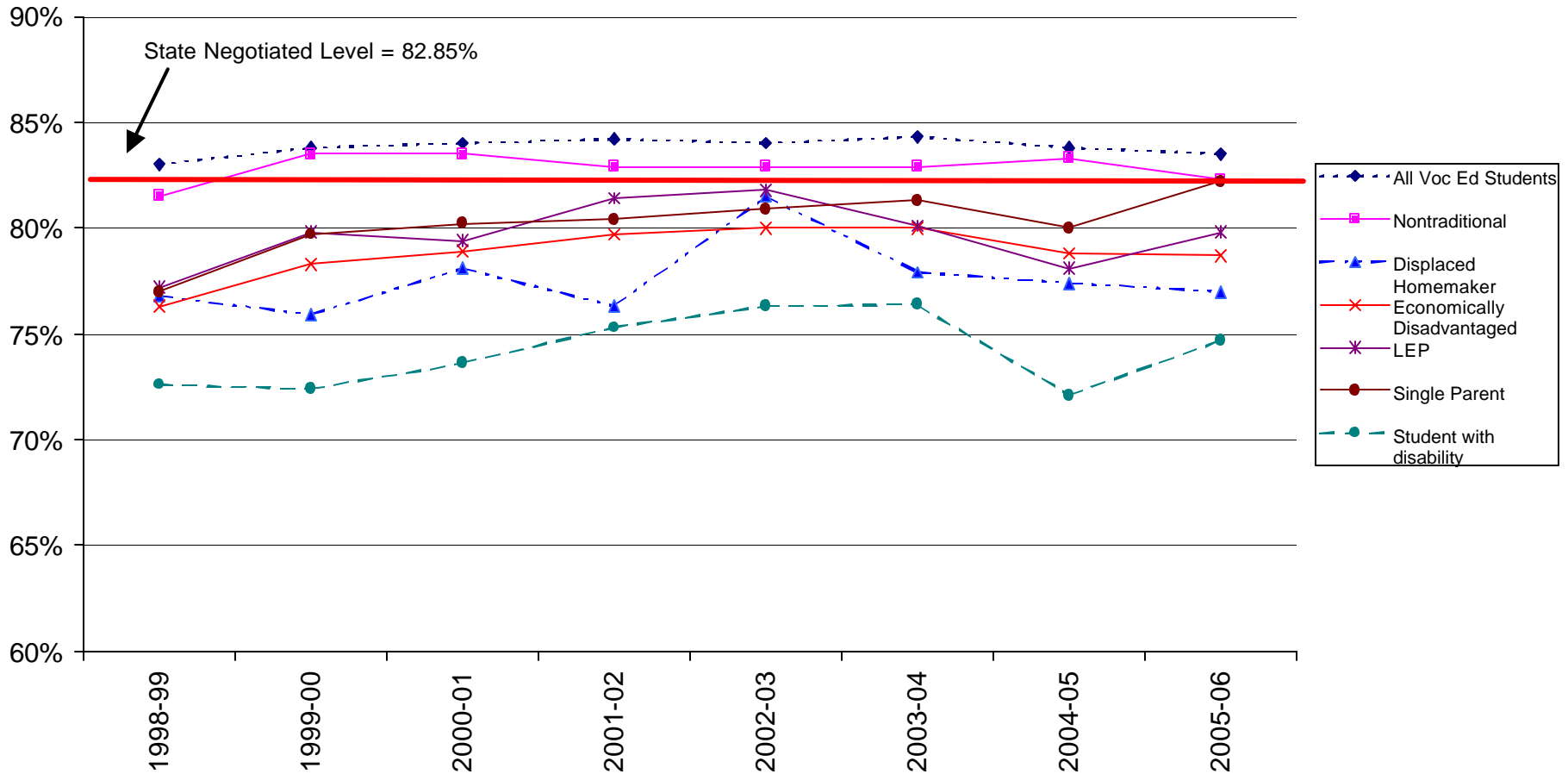
**Core Indicator #3a – Percent of vocational education students who were found in California UI covered employment or a four-year public educational institution one year following data collection**



- ◆ Nontraditional students have been most successful in obtaining employment or continuing their education at a four-year college.
- ◆ Students with Disabilities, LEP students and Displaced Homemakers have continually fallen below the State Negotiated Level over the last eight years.
- ◆ Employment and/or additional postsecondary enrollment for Students with Disabilities is significantly declining compared to all other groups.
- ◆ There is a slight downward trend in employment or post secondary enrollment for all groups since 2002-03. This perhaps reflects general economic conditions.

Graphs reflect data reported for the most recent year available. For example, outcomes for Indicator 1 (Skill Attainment) are from the previous academic year while outcomes for Indicators 2 – 4 (Completions, Placement, Retention and Equity) are from the previous year for students who were last enrolled two years prior. For a complete explanation, see [http://misweb.cccco.edu/voc\\_ed/vtea/VTEA1999-00Reportsv3.pdf](http://misweb.cccco.edu/voc_ed/vtea/VTEA1999-00Reportsv3.pdf)

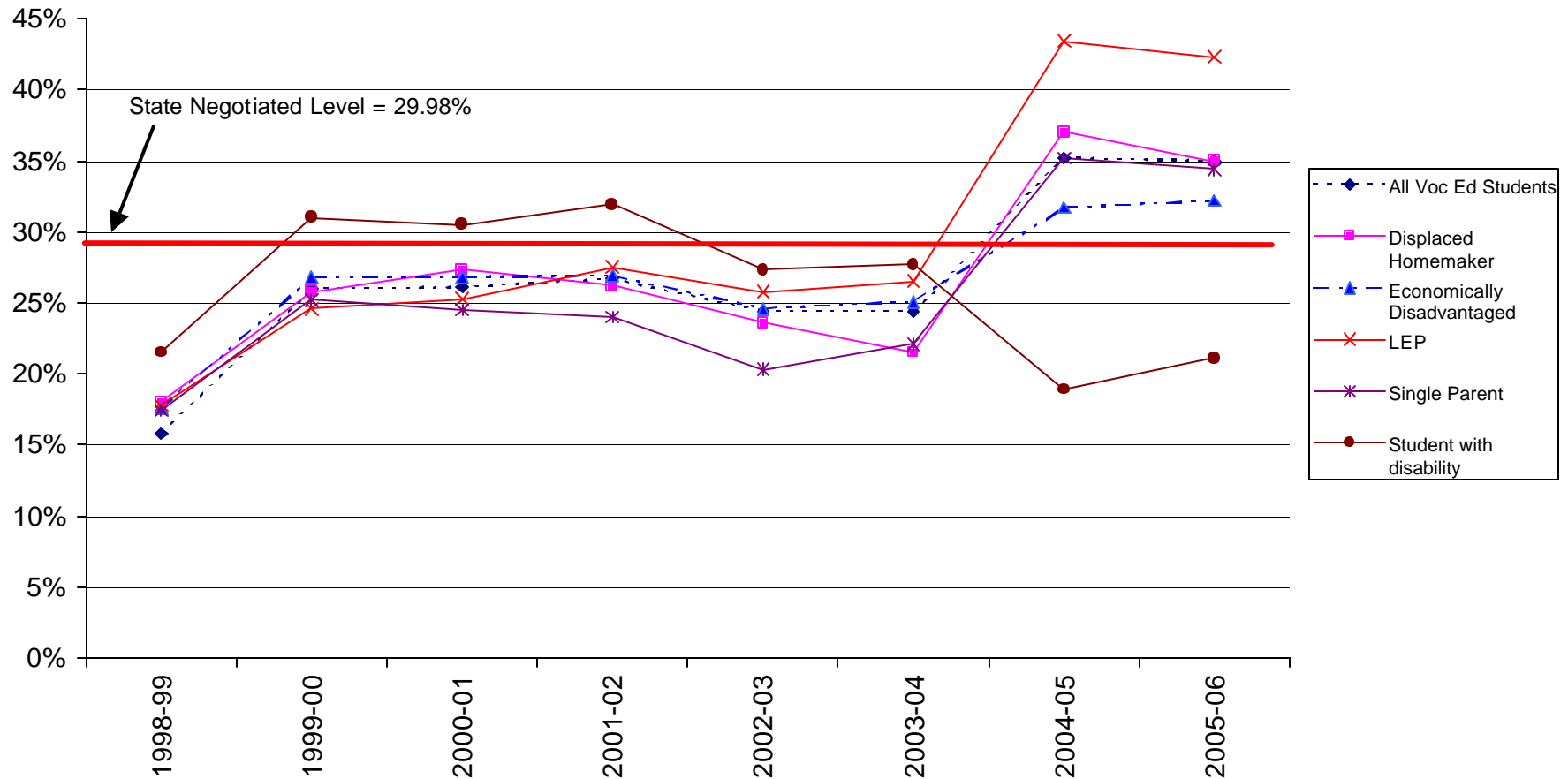
**Core Indicator #3b – Percent of California UI covered cohort students who were found employed for at least three quarters**



- ◆ Nontraditional students have met or exceeded State Negotiated Levels over the last seven years.
- ◆ Nontraditional students are the most likely special population subgroup to be working.
- ◆ Students with Disabilities followed by Displaced Homemakers have had the lowest level of employment success amongst the six groups.

Graphs reflect data reported for the most recent year available. For example, outcomes for Indicator 1 (Skill Attainment) are from the previous academic year while outcomes for Indicators 2 – 4 (Completions, Placement, Retention and Equity) are from the previous year for students who were last enrolled two years prior. For a complete explanation, see [http://misweb.cccco.edu/voc\\_ed/vtea/VTEA1999-00Reportsv3.pdf](http://misweb.cccco.edu/voc_ed/vtea/VTEA1999-00Reportsv3.pdf)

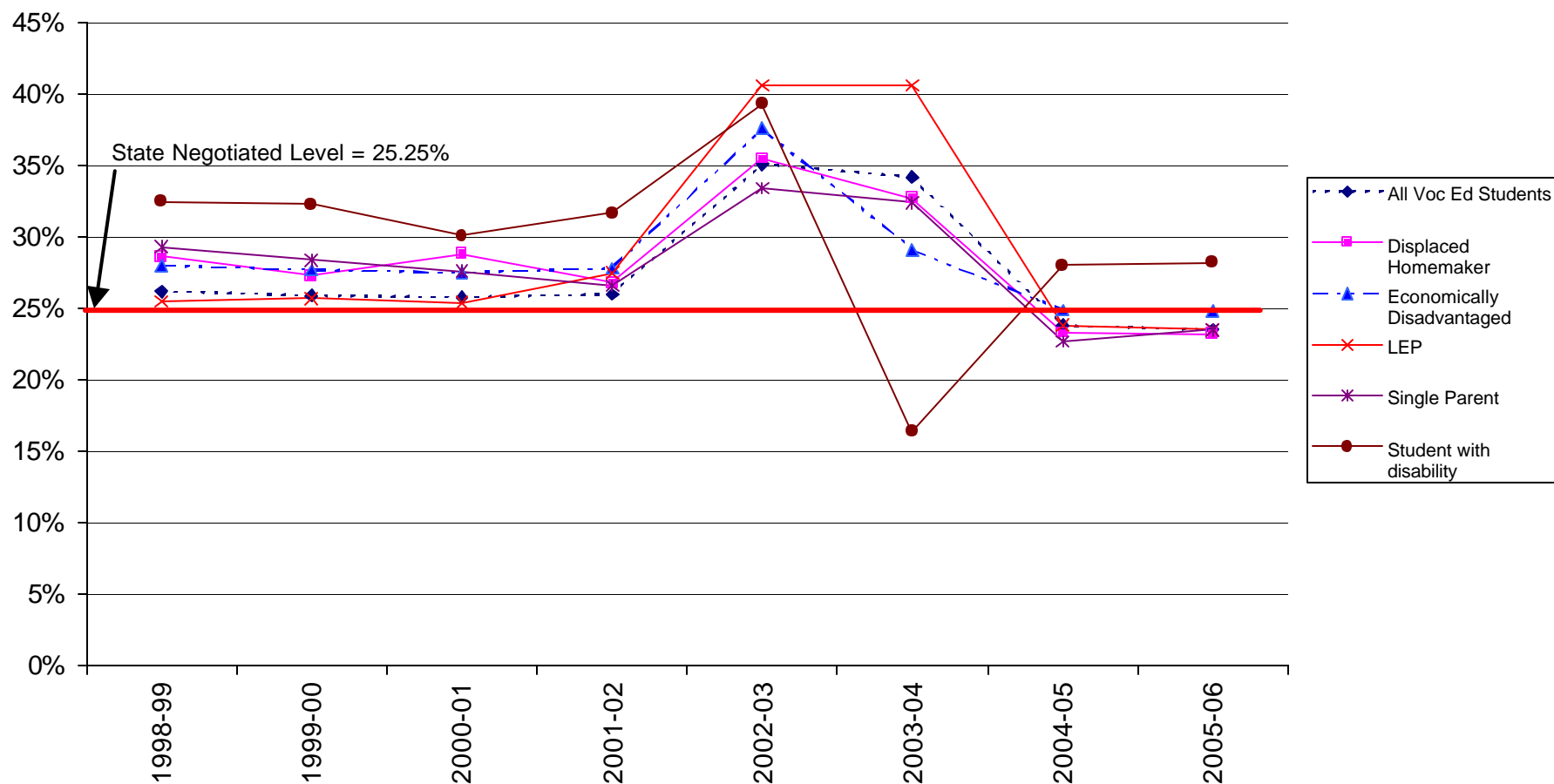
### Core Indicator #4a – Percent of any students in SAM A-D courses deemed Nontraditional



- ◆ Over the last two years all subgroups of Nontraditional students, with the exception of Students with Disabilities, have met and/or exceeded the State Negotiated Level for participation in courses deemed nontraditional.
- ◆ LEP Nontraditional students have had the highest increase in participation, while Students with Disabilities have had the lowest rate.

Graphs reflect data reported for the most recent year available. For example, outcomes for Indicator 1 (Skill Attainment) are from the previous academic year while outcomes for Indicators 2 – 4 (Completions, Placement, Retention and Equity) are from the previous year for students who were last enrolled two years prior. For a complete explanation, see [http://misweb.cccco.edu/voc\\_ed/vtea/VTEA1999-00Reportsv3.pdf](http://misweb.cccco.edu/voc_ed/vtea/VTEA1999-00Reportsv3.pdf)

### Core Indicator #4b – Percent of vocational education student completers in programs deemed nontraditional



- ◆ Over the last three years, completion rates for all Nontraditional groups have declined.
- ◆ Nontraditional Students with Disabilities are the most likely to complete courses of all nontraditional special population subgroups. However, data on employment success (indicators 3a and 3b) report that Students with Disabilities in general have the least employment success.

Graphs reflect data reported for the most recent year available. For example, outcomes for Indicator 1 (Skill Attainment) are from the previous academic year while outcomes for Indicators 2 – 4 (Completions, Placement, Retention and Equity) are from the previous year for students who were last enrolled two years prior. For a complete explanation, see [http://misweb.cccco.edu/voc\\_ed/vtea/VTEA1999-00Reportsv3.pdf](http://misweb.cccco.edu/voc_ed/vtea/VTEA1999-00Reportsv3.pdf)

# **Appendix A**

## **Data Tables**

**Aggregated Core Indicator Data – 2005-06**  
**Performance Of All Voc Ed & Special Populations Students**

|                            | Core Indicator 1<br>SNL = 79.76% | Core Indicator 2<br>SNL = 60.82% | Core Indicator 3a<br>SNL = 83.19% | Core Indicator 3b<br>SNL = 82.85% | Core Indicator 4a<br>SNL = 29.98% | Core Indicator 4b<br>SNL = 25.25% |
|----------------------------|----------------------------------|----------------------------------|-----------------------------------|-----------------------------------|-----------------------------------|-----------------------------------|
| All Voc Ed Students        | 84.7%                            | 73.5%                            | 82.1%                             | 83.5%                             | 35.0%                             | 23.5%                             |
| Nontraditional             | 86.0%                            | 75.3%                            | 81.9%                             | 82.3%                             | NA                                | NA                                |
| Displaced homemaker        | 83.8%                            | 70.1%                            | 74.6%                             | 77.0%                             | 35.0%                             | 23.2%                             |
| Economically disadvantaged | 83.6%                            | 74.6%                            | 79.2%                             | 78.7%                             | 32.2%                             | 24.8%                             |
| LEP                        | 87.8%                            | 78.4%                            | 73.5%                             | 79.8%                             | 42.3%                             | 23.5%                             |
| Single Parent              | 81.4%                            | 74.3%                            | 81.7%                             | 82.2%                             | 34.4%                             | 23.5%                             |
| Student with disability    | 80.2%                            | 83.0%                            | 64.9%                             | 74.7%                             | 21.1%                             | 28.2%                             |

Source: [www.cccco.edu](http://www.cccco.edu)

Shading indicates results falling below State Negotiated Level.

Graphs reflect data reported for the most recent year available. For example, outcomes for Indicator 1 (Skill Attainment) are from the previous academic year while outcomes for Indicators 2 – 4 (Completions, Placement, Retention and Equity) are from the previous year for students who were last enrolled two years prior. For a complete explanation, see [http://misweb.cccco.edu/voc\\_ed/vtea/VTEA1999-00Reportsv3.pdf](http://misweb.cccco.edu/voc_ed/vtea/VTEA1999-00Reportsv3.pdf)

**Aggregated Core Indicator Data – 1998-2005  
Performance Of All Voc Ed & Special Populations Students**

**Core Indicator 1**

|                            | <b>2005-06</b> | <b>2004-05</b> | <b>2003-04</b> | <b>2002-03</b> | <b>2001-02</b> | <b>2000-01</b> | <b>1999-00</b> | <b>1998-99</b> |
|----------------------------|----------------|----------------|----------------|----------------|----------------|----------------|----------------|----------------|
| All Voc Ed Students        | 84.7%          | 84.7%          | 77.1%          | 75.9%          | 75.6%          | 75.8%          | 75.5%          | 75.2%          |
| Nontraditional             | 86.0%          | 83.9%          | 74.1%          | 73.2%          | 73.2%          | 73.5%          | 72.6%          | 71.9%          |
| Displaced homemaker        | 83.8%          | 83.6%          | 73.7%          | 74.3%          | 73.0%          | 71.1%          | 71.1%          | 72.0%          |
| Economically disadvantaged | 83.6%          | 82.8%          | 71.1%          | 71.4%          | 70.9%          | 70.9%          | 70.9%          | 70.9%          |
| LEP                        | 87.8%          | 80.9%          | 77.7%          | 76.4%          | 76.8%          | 77.8%          | 78.0%          | 77.8%          |
| Single Parent              | 81.4%          | 81.0%          | 74.0%          | 73.5%          | 71.7%          | 71.4%          | 71.3%          | 70.5%          |
| Student with disability    | 80.2%          | 80.2%          | 70.2%          | 69.5%          | 70.1%          | 69.8%          | 70.5%          | 70.8%          |

**Core Indicator 2**

|                            | <b>2005-06</b> | <b>2004-05</b> | <b>2003-04</b> | <b>2002-03</b> | <b>2001-02</b> | <b>2000-01</b> | <b>1999-00</b> | <b>1998-99</b> |
|----------------------------|----------------|----------------|----------------|----------------|----------------|----------------|----------------|----------------|
| All Voc Ed Students        | 73.5%          | 74.9%          | 76.4%          | 72.7%          | 63.7%          | 62.5%          | 63.9%          | 57.5%          |
| Nontraditional             | 75.3%          | 77.3%          | 78.5%          | 74.3%          | 65.3%          | 63.5%          | 64.2%          | 60.2%          |
| Displaced homemaker        | 70.1%          | 75.8%          | 74.6%          | 75.1%          | 66.0%          | 62.5%          | 66.0%          | 62.2%          |
| Economically disadvantaged | 74.6%          | 76.8%          | 76.6%          | 73.8%          | 68.5%          | 66.8%          | 67.9%          | 62.7%          |
| LEP                        | 78.4%          | 80.0%          | 80.3%          | 76.8%          | 68.7%          | 67.5%          | 69.8%          | 63.7%          |
| Single Parent              | 74.3%          | 74.0%          | 75.4%          | 74.2%          | 64.3%          | 63.0%          | 65.9%          | 61.1%          |
| Student with disability    | 83.0%          | 83.3%          | 83.0%          | 80.9%          | 71.0%          | 70.1%          | 72.9%          | 65.3%          |

**Core Indicator 3a**

|                            | <b>2005-06</b> | <b>2004-05</b> | <b>2003-04</b> | <b>2002-03</b> | <b>2001-02</b> | <b>2000-01</b> | <b>1999-00</b> | <b>1998-99</b> |
|----------------------------|----------------|----------------|----------------|----------------|----------------|----------------|----------------|----------------|
| All Voc Ed Students        | 82.1%          | 82.5%          | 84.1%          | 84.9%          | 84.9%          | 84.6%          | 84.7%          | 84.7%          |
| Nontraditional             | 81.9%          | 81.0%          | 83.5%          | 84.4%          | 84.9%          | 85.1%          | 84.1%          | 84.0%          |
| Displaced homemaker        | 74.6%          | 74.4%          | 75.8%          | 78.2%          | 77.0%          | 80.3%          | 79.3%          | 78.0%          |
| Economically disadvantaged | 79.2%          | 79.3%          | 81.2%          | 83.1%          | 83.5%          | 82.9%          | 82.3%          | 80.9%          |
| LEP                        | 73.5%          | 73.7%          | 75.3%          | 76.8%          | 79.3%          | 78.0%          | 78.2%          | 76.0%          |
| Single Parent              | 81.7%          | 80.3%          | 82.1%          | 84.4%          | 83.7%          | 83.9%          | 82.4%          | 80.6%          |
| Student with disability    | 64.9%          | 64.6%          | 70.3%          | 74.3%          | 72.3%          | 71.5%          | 72.9%          | 70.8%          |

### Core Indicator 3b

|                            | <b>2005-06</b> | <b>2004-05</b> | <b>2003-04</b> | <b>2002-03</b> | <b>2001-02</b> | <b>2000-01</b> | <b>1999-00</b> | <b>1998-99</b> |
|----------------------------|----------------|----------------|----------------|----------------|----------------|----------------|----------------|----------------|
| All Voc Ed Students        | 83.5%          | 83.8%          | 84.3%          | 84.0%          | 84.2%          | 84.0%          | 83.8%          | 83.0%          |
| Nontraditional             | 82.3%          | 83.3%          | 82.9%          | 82.9%          | 82.9%          | 83.5%          | 83.5%          | 81.5%          |
| Displaced homemaker        | 77.0%          | 77.4%          | 77.9%          | 81.5%          | 76.3%          | 78.1%          | 75.9%          | 76.8%          |
| Economically disadvantaged | 78.7%          | 78.8%          | 80.0%          | 80.0%          | 79.7%          | 78.9%          | 78.3%          | 76.3%          |
| LEP                        | 79.8%          | 78.1%          | 80.1%          | 81.8%          | 81.4%          | 79.4%          | 79.8%          | 77.2%          |
| Single Parent              | 82.2%          | 80.0%          | 81.3%          | 80.9%          | 80.4%          | 80.2%          | 79.7%          | 77.0%          |
| Student with disability    | 74.7%          | 72.1%          | 76.4%          | 76.3%          | 75.3%          | 73.6%          | 72.4%          | 72.6%          |

### Core Indicator 4a

|                            | <b>2005-06</b> | <b>2004-05</b> | <b>2003-04</b> | <b>2002-03</b> | <b>2001-02</b> | <b>2000-01</b> | <b>1999-00</b> | <b>1998-99</b> |
|----------------------------|----------------|----------------|----------------|----------------|----------------|----------------|----------------|----------------|
| All Voc Ed Students        | 35.0%          | 35.2%          | 24.4%          | 24.4%          | 26.7%          | 26.1%          | 26.0%          | 15.8%          |
| Displaced homemaker        | 35.0%          | 37.0%          | 21.5%          | 23.6%          | 26.2%          | 27.3%          | 25.8%          | 18.0%          |
| Economically disadvantaged | 32.2%          | 31.7%          | 25.1%          | 24.6%          | 26.9%          | 26.8%          | 26.8%          | 17.6%          |
| LEP                        | 42.3%          | 43.4%          | 26.5%          | 25.8%          | 27.5%          | 25.3%          | 24.6%          | 17.8%          |
| Single Parent              | 34.4%          | 35.2%          | 22.1%          | 20.3%          | 24.0%          | 24.5%          | 25.2%          | 17.4%          |
| Student with disability    | 21.1%          | 18.9%          | 27.7%          | 27.3%          | 31.9%          | 30.5%          | 31.0%          | 21.5%          |

### Core Indicator 4b

|                            | <b>2005-06</b> | <b>2004-05</b> | <b>2003-04</b> | <b>2002-03</b> | <b>2001-02</b> | <b>2000-01</b> | <b>1999-00</b> | <b>1998-99</b> |
|----------------------------|----------------|----------------|----------------|----------------|----------------|----------------|----------------|----------------|
| All Voc Ed Students        | 23.5%          | 23.8%          | 34.2%          | 35.1%          | 26.0%          | 25.8%          | 25.9%          | 26.2%          |
| Displaced homemaker        | 23.2%          | 23.3%          | 32.7%          | 35.5%          | 26.8%          | 28.8%          | 27.3%          | 28.6%          |
| Economically disadvantaged | 24.8%          | 24.9%          | 29.1%          | 37.6%          | 27.8%          | 27.5%          | 27.7%          | 28.0%          |
| LEP                        | 23.5%          | 23.8%          | 40.6%          | 40.6%          | 27.5%          | 25.4%          | 25.7%          | 25.5%          |
| Single Parent              | 23.5%          | 22.7%          | 32.4%          | 33.4%          | 26.6%          | 27.6%          | 28.4%          | 29.3%          |
| Student with disability    | 28.2%          | 28.0%          | 16.4%          | 39.3%          | 31.7%          | 30.1%          | 32.3%          | 32.5%          |

Graphs reflect data reported for the most recent year available. For example, outcomes for Indicator 1 (Skill Attainment) are from the previous academic year while outcomes for Indicators 2 – 4 (Completions, Placement, Retention and Equity) are from the previous year for students who were last enrolled two years prior. For a complete explanation, see [http://misweb.cccco.edu/voc\\_ed/vtea/VTEA1999-00Reportsv3.pdf](http://misweb.cccco.edu/voc_ed/vtea/VTEA1999-00Reportsv3.pdf)